

Rose Tree-Media School District

Residential Market Report

SUBURBAN WEST REALTORS' ASSOCIATION
PROFESSIONALISM • INTEGRITY • SERVICE

HOUSING REPORT

Single Family Homes

March 2015

PENDING

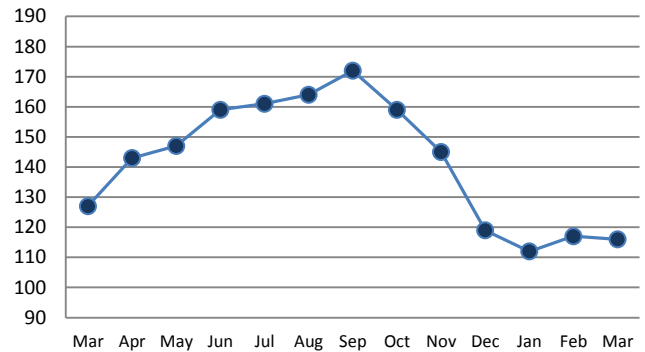
Price Range	New This Month			Year-To-Date		
	2014	2015	% Change	2014	2015	% Change
0 - 149,999	0	0	--	0	0	--
150,000 - 199,999	1	2	100.0%	4	9	125.0%
200,000 - 299,999	12	18	50.0%	30	30	0.0%
300,000 - 399,999	9	5	-44.4%	20	18	-10.0%
400,000 - 499,999	6	9	50.0%	14	15	7.1%
500,000 - 599,999	4	4	0.0%	8	9	12.5%
600,000 - 699,999	1	0	-100.0%	3	1	-66.7%
700,000 - 799,999	1	1	0.0%	2	3	50.0%
800,000 - 899,999	0	0	--	0	0	--
900,000 - 999,999	0	0	--	1	1	0.0%
1,000,000 - 1,999,999	0	0	--	1	1	0.0%
2,000,000 +	0	0	--	1	0	-100.0%
TOTALS	34	39	14.7%	84	87	3.6%

SETTLEMENTS

Price Range	New This Month			Year-To-Date		
	2014	2015	% Change	2014	2015	% Change
0 - 149,999	0	0	--	0	2	--
150,000 - 199,999	0	5	--	5	7	40.0%
200,000 - 299,999	7	6	-14.3%	19	18	-5.3%
300,000 - 399,999	5	5	0.0%	13	14	7.7%
400,000 - 499,999	2	3	50.0%	8	4	-50.0%
500,000 - 599,999	1	2	100.0%	2	6	200.0%
600,000 - 699,999	0	1	--	2	1	-50.0%
700,000 - 799,999	0	1	--	0	2	--
800,000 - 899,999	0	1	--	0	1	--
900,000 - 999,999	1	0	-100.0%	1	0	-100.0%
1,000,000 - 1,999,999	0	1	--	0	2	--
2,000,000 +	0	0	--	1	0	-100.0%
TOTALS	16	25	56.3%	51	57	11.8%

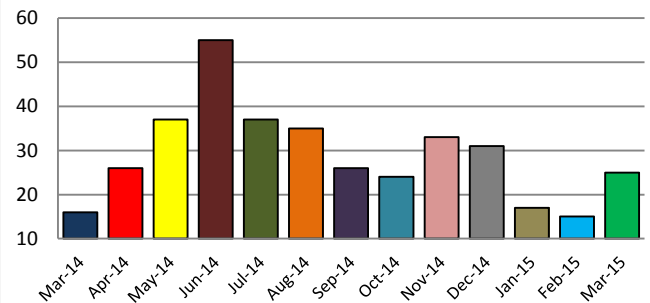
INVENTORY TREND

Listings Active at End of Month

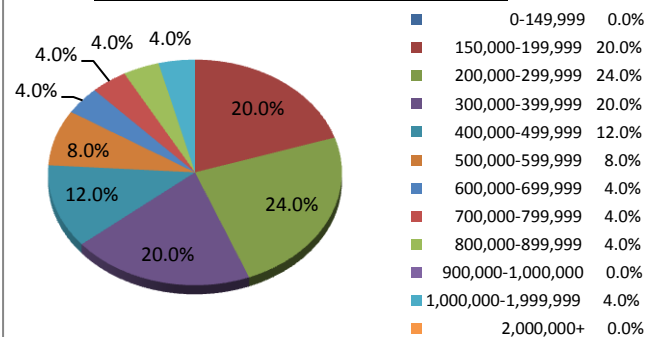


SALES TREND

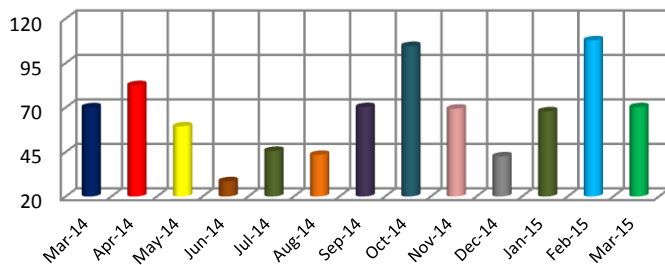
Settlements Per Month



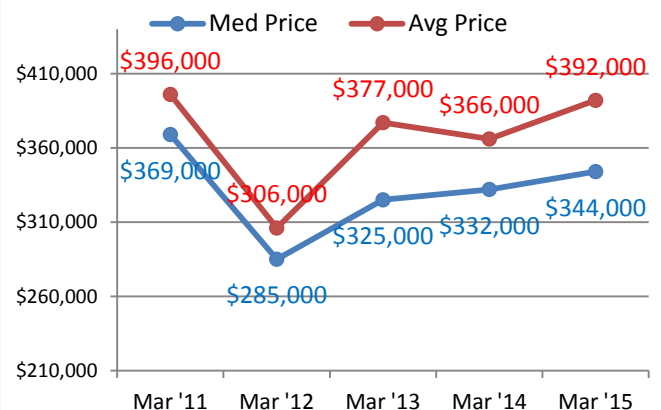
SETTLEMENTS BY PRICE RANGE



AVERAGE DAYS ON MARKET



AVERAGE & MEDIAN PRICE



DATA SOURCE: Trend Multiple Listing Service

NOTES: Properties not listed through this MLS are not reflected. The term "sales" represents ratified purchase contracts. Current year information is preliminary and subject to revision. Current year-to-date contract information may not equal the sum of the monthly contract totals reported above