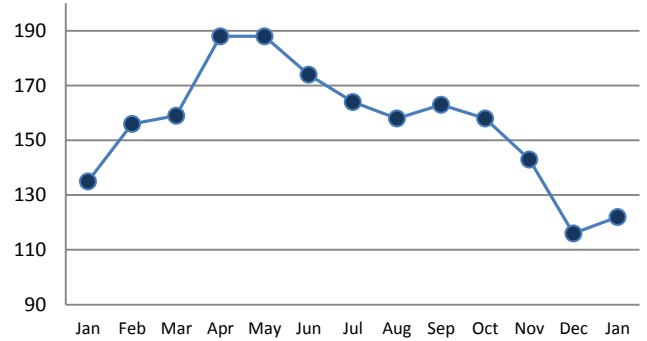


PENDING

Price Range	New This Month			Year-To-Date		
	2013	2014	% Change	2013	2014	% Change
0 - 149,999	0	0	--	0	0	--
150,000 - 199,999	1	1	0.0%	1	1	0.0%
200,000 - 299,999	8	2	-75.0%	8	2	-75.0%
300,000 - 399,999	6	4	-33.3%	6	4	-33.3%
400,000 - 499,999	3	3	0.0%	3	3	0.0%
500,000 - 599,999	8	3	-62.5%	8	3	-62.5%
600,000 - 699,999	2	4	100.0%	2	4	100.0%
700,000 - 799,999	4	2	-50.0%	4	2	-50.0%
800,000 - 899,999	1	2	100.0%	1	2	100.0%
900,000 - 999,999	1	1	0.0%	1	1	0.0%
1,000,000 - 1,999,999	3	3	0.0%	3	3	0.0%
2,000,000 +	0	0	--	0	0	--
TOTALS	37	25	-32.4%	37	25	-32.4%

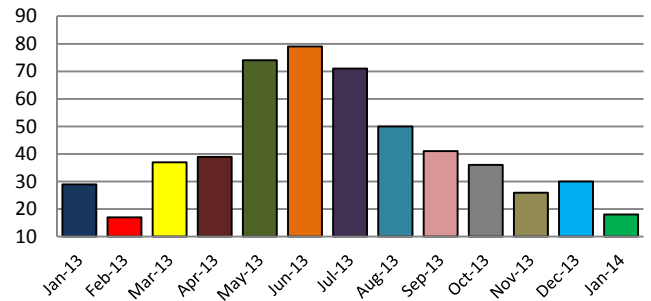
INVENTORY TREND
Listings Active at End of Month



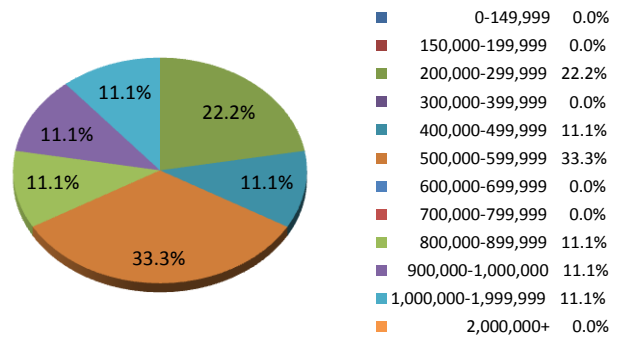
SETTLEMENTS

Price Range	New This Month			Year-To-Date		
	2013	2014	% Change	2013	2014	% Change
0 - 149,999	0	0	--	0	0	--
150,000 - 199,999	2	0	-100.0%	2	0	-100.0%
200,000 - 299,999	7	4	-42.9%	7	4	-42.9%
300,000 - 399,999	6	0	-100.0%	6	0	-100.0%
400,000 - 499,999	4	2	-50.0%	4	2	-50.0%
500,000 - 599,999	2	6	200.0%	2	6	200.0%
600,000 - 699,999	2	0	-100.0%	2	0	-100.0%
700,000 - 799,999	2	0	-100.0%	2	0	-100.0%
800,000 - 899,999	1	2	100.0%	1	2	100.0%
900,000 - 999,999	1	2	100.0%	1	2	100.0%
1,000,000 - 1,999,999	2	2	0.0%	2	2	0.0%
2,000,000 +	0	0	--	0	0	--
TOTALS	29	18	-37.9%	29	18	-37.9%

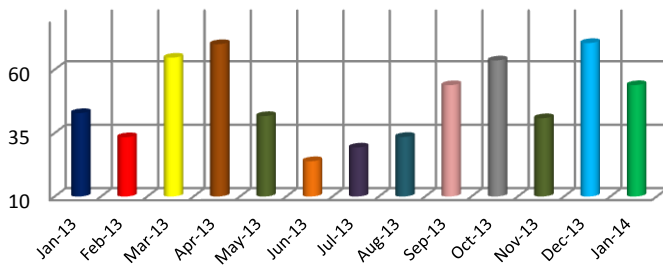
SALES TREND
Settlements Per Month



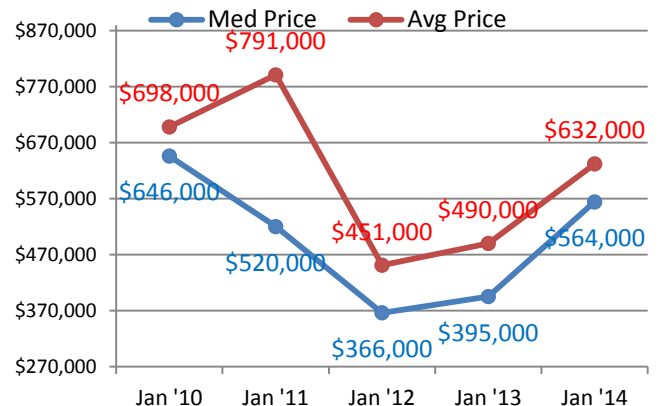
SETTLEMENTS BY PRICE RANGE



AVERAGE DAYS ON MARKET



AVERAGE & MEDIAN PRICE



DATA SOURCE: Trend Multiple Listing Service

NOTES: Properties not listed through this MLS are not reflected. The term "sales" represents ratified purchase contracts. Current year information is preliminary and subject to revision. Current year-to-date contract information may not equal the sum of the monthly contract totals reported above