



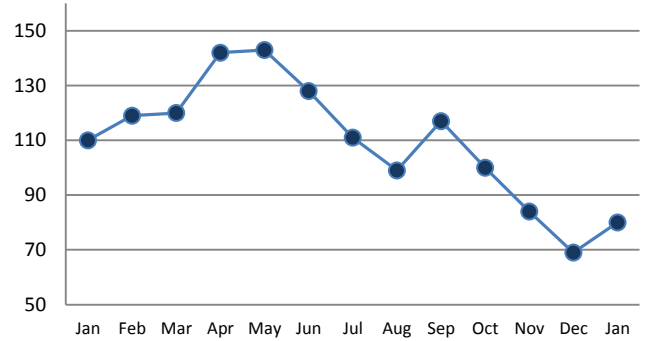
**PENDING**

| Price Range           | New This Month |           |               | Year-To-Date |           |               |
|-----------------------|----------------|-----------|---------------|--------------|-----------|---------------|
|                       | 2013           | 2014      | % Change      | 2013         | 2014      | % Change      |
| 0 - 149,999           | 0              | 0         | --            | 0            | 0         | --            |
| 150,000 - 199,999     | 0              | 0         | --            | 0            | 0         | --            |
| 200,000 - 299,999     | 1              | 1         | 0.0%          | 1            | 1         | 0.0%          |
| 300,000 - 399,999     | 4              | 3         | -25.0%        | 4            | 3         | -25.0%        |
| 400,000 - 499,999     | 3              | 0         | -100.0%       | 3            | 0         | -100.0%       |
| 500,000 - 599,999     | 1              | 2         | 100.0%        | 1            | 2         | 100.0%        |
| 600,000 - 699,999     | 1              | 0         | -100.0%       | 1            | 0         | -100.0%       |
| 700,000 - 799,999     | 4              | 1         | -75.0%        | 4            | 1         | -75.0%        |
| 800,000 - 899,999     | 1              | 0         | -100.0%       | 1            | 0         | -100.0%       |
| 900,000 - 999,999     | 1              | 0         | -100.0%       | 1            | 0         | -100.0%       |
| 1,000,000 - 1,999,999 | 6              | 5         | -16.7%        | 6            | 5         | -16.7%        |
| 2,000,000 +           | 1              | 1         | 0.0%          | 1            | 1         | 0.0%          |
| <b>TOTALS</b>         | <b>23</b>      | <b>13</b> | <b>-43.5%</b> | <b>23</b>    | <b>13</b> | <b>-43.5%</b> |

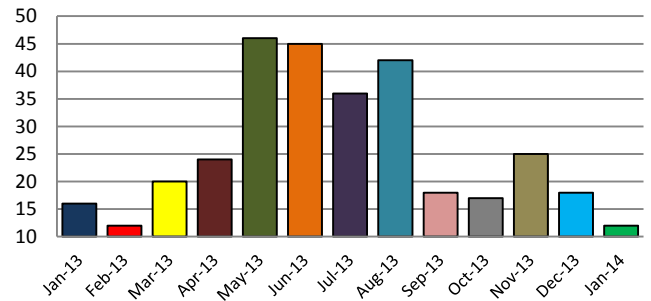
**SETTLEMENTS**

| Price Range           | New This Month |           |               | Year-To-Date |           |               |
|-----------------------|----------------|-----------|---------------|--------------|-----------|---------------|
|                       | 2013           | 2014      | % Change      | 2013         | 2014      | % Change      |
| 0 - 149,999           | 0              | 0         | --            | 0            | 0         | --            |
| 150,000 - 199,999     | 0              | 0         | --            | 0            | 0         | --            |
| 200,000 - 299,999     | 2              | 0         | -100.0%       | 2            | 0         | -100.0%       |
| 300,000 - 399,999     | 1              | 1         | 0.0%          | 1            | 1         | 0.0%          |
| 400,000 - 499,999     | 4              | 5         | 25.0%         | 4            | 5         | 25.0%         |
| 500,000 - 599,999     | 1              | 2         | 100.0%        | 1            | 2         | 100.0%        |
| 600,000 - 699,999     | 1              | 0         | -100.0%       | 1            | 0         | -100.0%       |
| 700,000 - 799,999     | 3              | 2         | -33.3%        | 3            | 2         | -33.3%        |
| 800,000 - 899,999     | 1              | 0         | -100.0%       | 1            | 0         | -100.0%       |
| 900,000 - 999,999     | 1              | 0         | -100.0%       | 1            | 0         | -100.0%       |
| 1,000,000 - 1,999,999 | 2              | 1         | -50.0%        | 2            | 1         | -50.0%        |
| 2,000,000 +           | 0              | 1         | --            | 0            | 1         | --            |
| <b>TOTALS</b>         | <b>16</b>      | <b>12</b> | <b>-25.0%</b> | <b>16</b>    | <b>12</b> | <b>-25.0%</b> |

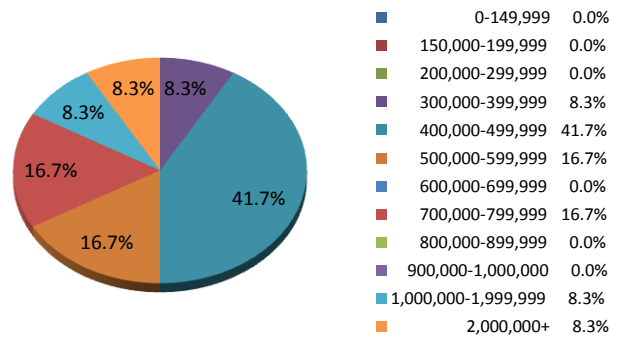
**INVENTORY TREND**  
Listings Active at End of Month



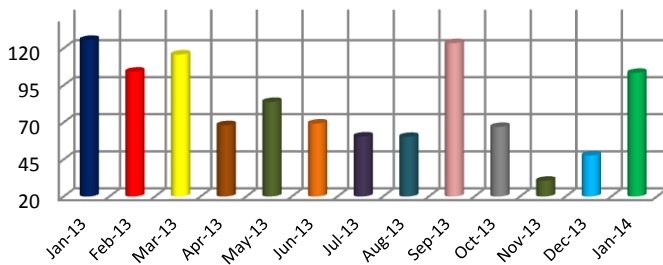
**SALES TREND**  
Settlements Per Month



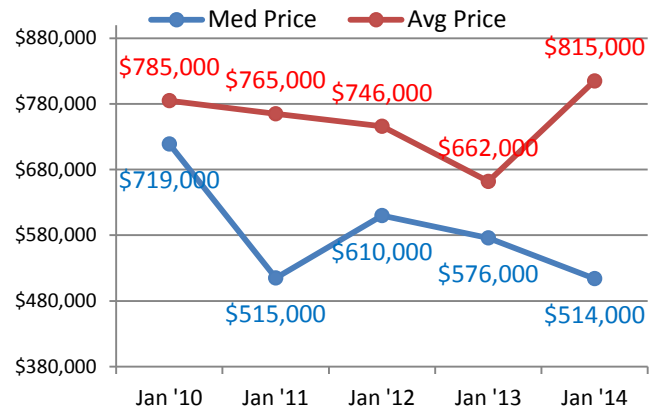
**SETTLEMENTS BY PRICE RANGE**



**AVERAGE DAYS ON MARKET**



**AVERAGE & MEDIAN PRICE**



DATA SOURCE: Trend Multiple Listing Service

NOTES: Properties not listed through this MLS are not reflected. The term "sales" represents ratified purchase contracts. Current year information is preliminary and subject to revision. Current year-to-date contract information may not equal the sum of the monthly contract totals reported above