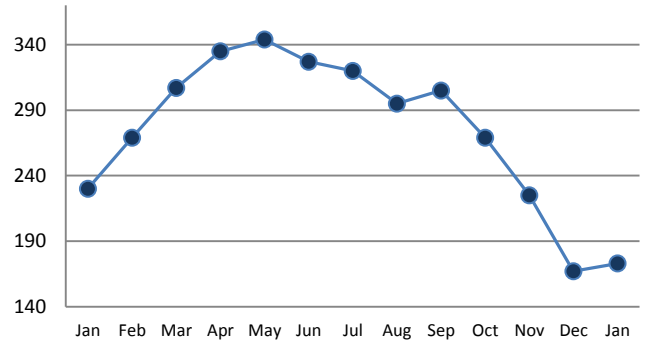


**PENDING**

Price Range	New This Month			Year-To-Date		
	2013	2014	% Change	2013	2014	% Change
0 - 149,999	0	0	--	0	0	--
150,000 - 199,999	2	2	0.0%	2	2	0.0%
200,000 - 299,999	9	5	-44.4%	9	5	-44.4%
300,000 - 399,999	10	9	-10.0%	10	9	-10.0%
400,000 - 499,999	4	3	-25.0%	4	3	-25.0%
500,000 - 599,999	7	2	-71.4%	7	2	-71.4%
600,000 - 699,999	1	3	200.0%	1	3	200.0%
700,000 - 799,999	5	9	80.0%	5	9	80.0%
800,000 - 899,999	4	1	-75.0%	4	1	-75.0%
900,000 - 999,999	0	2	--	0	2	--
1,000,000 - 1,999,999	7	4	-42.9%	7	4	-42.9%
2,000,000 +	0	0	--	0	0	--
<b>TOTALS</b>	<b>49</b>	<b>40</b>	<b>-18.4%</b>	<b>49</b>	<b>40</b>	<b>-18.4%</b>

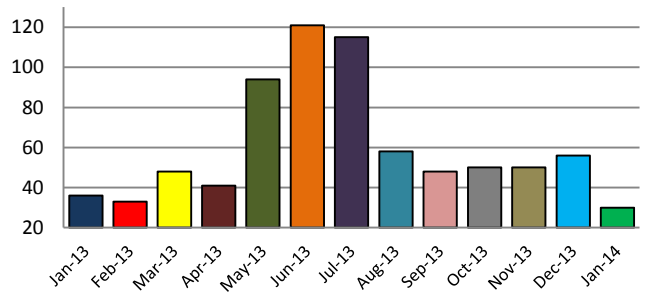
**INVENTORY TREND**  
*Listings Active at End of Month*



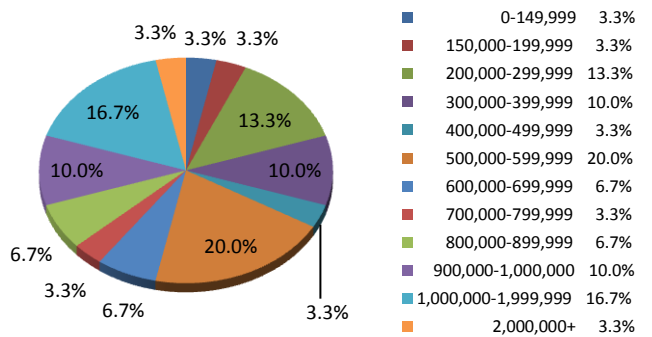
**SETTLEMENTS**

Price Range	New This Month			Year-To-Date		
	2013	2014	% Change	2013	2014	% Change
0 - 149,999	1	1	0.0%	1	1	0.0%
150,000 - 199,999	1	1	0.0%	1	1	0.0%
200,000 - 299,999	3	4	33.3%	3	4	33.3%
300,000 - 399,999	6	3	-50.0%	6	3	-50.0%
400,000 - 499,999	5	1	-80.0%	5	1	-80.0%
500,000 - 599,999	2	6	200.0%	2	6	200.0%
600,000 - 699,999	6	2	-66.7%	6	2	-66.7%
700,000 - 799,999	2	1	-50.0%	2	1	-50.0%
800,000 - 899,999	1	2	100.0%	1	2	100.0%
900,000 - 999,999	2	3	50.0%	2	3	50.0%
1,000,000 - 1,999,999	6	5	-16.7%	6	5	-16.7%
2,000,000 +	1	1	0.0%	1	1	0.0%
<b>TOTALS</b>	<b>36</b>	<b>30</b>	<b>-16.7%</b>	<b>36</b>	<b>30</b>	<b>-16.7%</b>

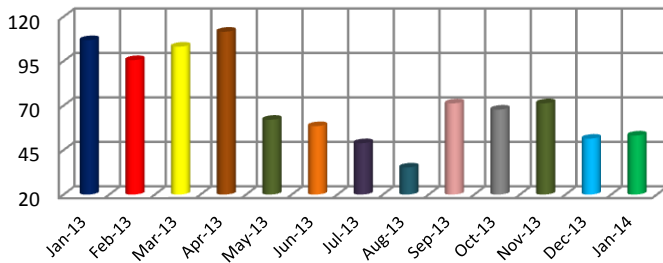
**SALES TREND**  
*Settlements Per Month*



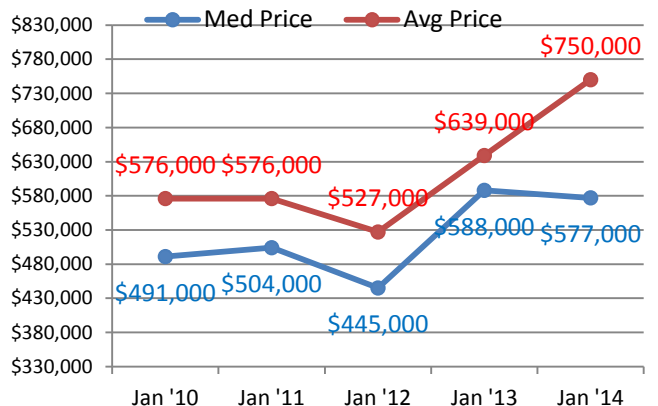
**SETTLEMENTS BY PRICE RANGE**



**AVERAGE DAYS ON MARKET**



**AVERAGE & MEDIAN PRICE**



DATA SOURCE: Trend Multiple Listing Service

NOTES: Properties not listed through this MLS are not reflected. The term "sales" represents ratified purchase contracts. Current year information is preliminary and subject to revision. Current year-to-date contract information may not equal the sum of the monthly contract totals reported above