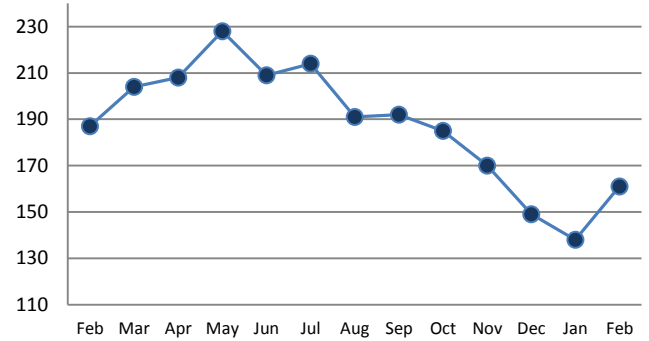




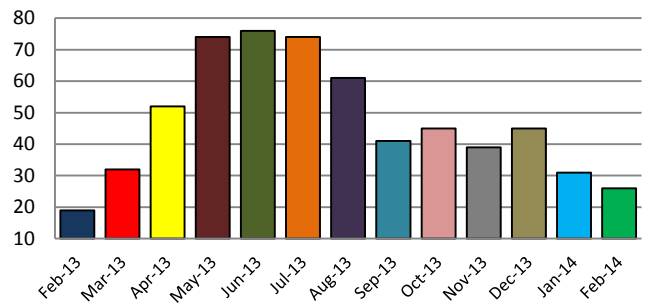
PENDING

Price Range	New This Month			Year-To-Date		
	2013	2014	% Change	2013	2014	% Change
0 - 149,999	1	1	0.0%	3	2	-33.3%
150,000 - 199,999	2	4	100.0%	4	10	150.0%
200,000 - 299,999	21	12	-42.9%	34	26	-23.5%
300,000 - 399,999	9	12	33.3%	19	20	5.3%
400,000 - 499,999	2	5	150.0%	4	9	125.0%
500,000 - 599,999	1	2	100.0%	2	4	100.0%
600,000 - 699,999	1	0	-100.0%	3	1	-66.7%
700,000 - 799,999	2	0	-100.0%	3	1	-66.7%
800,000 - 899,999	1	0	-100.0%	2	1	-50.0%
900,000 - 999,999	0	0	--	1	1	0.0%
1,000,000 - 1,999,999	0	2	--	0	2	--
2,000,000 +	0	0	--	0	0	--
TOTALS	40	38	-5.0%	75	77	2.7%

INVENTORY TREND
Listings Active at End of Month



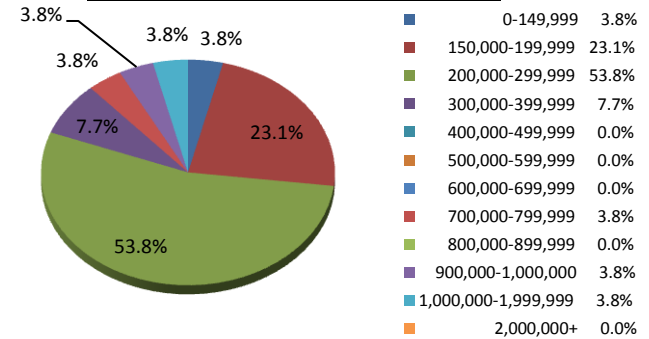
SALES TREND
Settlements Per Month



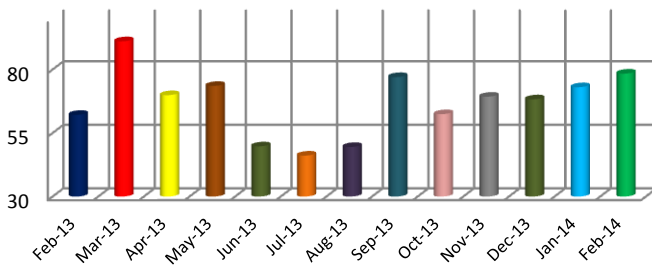
SETTLEMENTS

Price Range	New This Month			Year-To-Date		
	2013	2014	% Change	2013	2014	% Change
0 - 149,999	3	1	-66.7%	5	3	-40.0%
150,000 - 199,999	3	6	100.0%	6	9	50.0%
200,000 - 299,999	7	14	100.0%	21	25	19.0%
300,000 - 399,999	2	2	0.0%	7	8	14.3%
400,000 - 499,999	3	0	-100.0%	5	3	-40.0%
500,000 - 599,999	0	0	--	0	0	--
600,000 - 699,999	0	0	--	1	4	300.0%
700,000 - 799,999	0	1	--	0	2	--
800,000 - 899,999	1	0	-100.0%	3	0	-100.0%
900,000 - 999,999	0	1	--	0	1	--
1,000,000 - 1,999,999	0	1	--	0	2	--
2,000,000 +	0	0	--	0	0	--
TOTALS	19	26	36.8%	48	57	18.8%

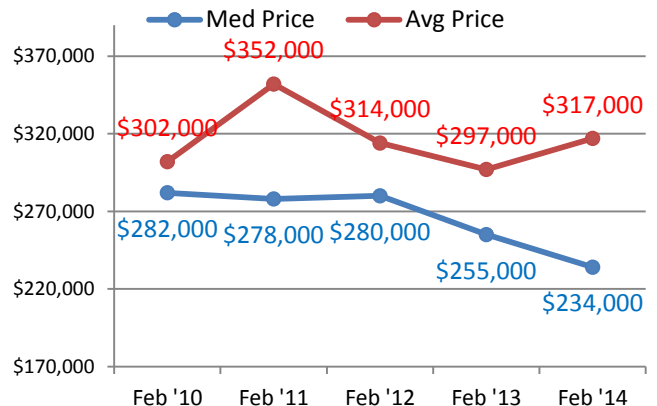
SETTLEMENTS BY PRICE RANGE



AVERAGE DAYS ON MARKET



AVERAGE & MEDIAN PRICE



DATA SOURCE: Trend Multiple Listing Service

NOTES: Properties not listed through this MLS are not reflected. The term "sales" represents ratified purchase contracts. Current year information is preliminary and subject to revision. Current year-to-date contract information may not equal the sum of the monthly contract totals reported above