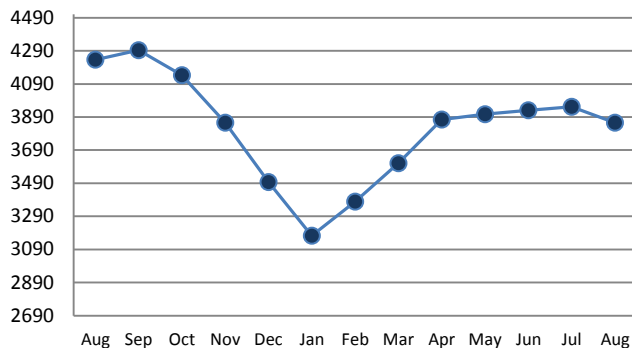


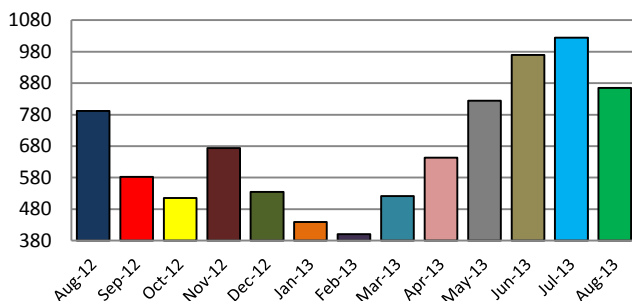
PENDING

Price Range	New This Month			Year-To-Date		
	2012	2013	% Change	2012	2013	% Change
0 - 149,999	92	82	-10.9%	634	631	-0.5%
150,000 - 199,999	99	105	6.1%	758	854	12.7%
200,000 - 299,999	202	205	1.5%	1870	2052	9.7%
300,000 - 399,999	113	145	28.3%	979	1270	29.7%
400,000 - 499,999	58	41	-29.3%	475	584	22.9%
500,000 - 599,999	27	37	37.0%	247	315	27.5%
600,000 - 699,999	20	13	-35.0%	156	178	14.1%
700,000 - 799,999	6	10	66.7%	61	90	47.5%
800,000 - 899,999	4	5	25.0%	55	48	-12.7%
900,000 - 999,999	4	2	-50.0%	30	32	6.7%
1,000,000 - 1,999,999	13	5	-61.5%	93	87	-6.5%
2,000,000 +	4	6	50.0%	19	21	10.5%
TOTALS	642	656	2.2%	5377	6162	14.6%

INVENTORY TREND
Listings Active at End of Month



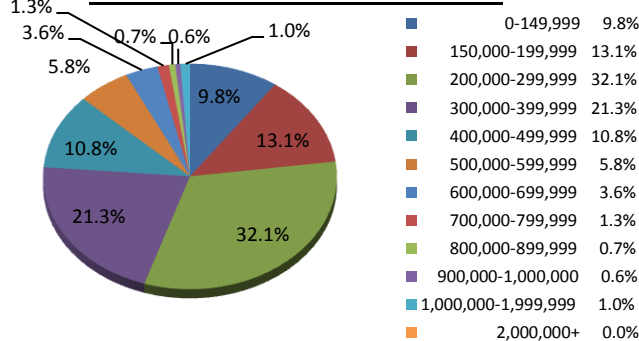
SALES TREND
Settlements Per Month



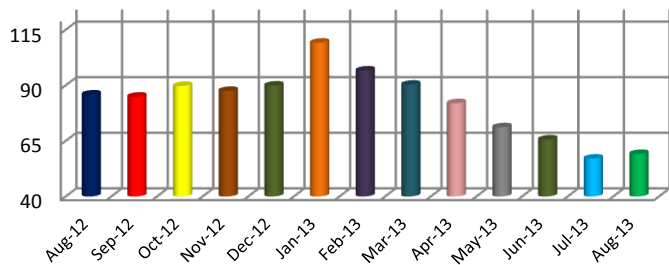
SETTLEMENTS

Price Range	New This Month			Year-To-Date		
	2012	2013	% Change	2012	2013	% Change
0 - 149,999	108	85	-21.3%	651	630	-3.2%
150,000 - 199,999	97	113	16.5%	714	798	11.8%
200,000 - 299,999	263	278	5.7%	1727	1928	11.6%
300,000 - 399,999	150	184	22.7%	869	1091	25.5%
400,000 - 499,999	71	93	31.0%	413	546	32.2%
500,000 - 599,999	41	50	22.0%	220	264	20.0%
600,000 - 699,999	24	31	29.2%	136	181	33.1%
700,000 - 799,999	7	11	57.1%	74	76	2.7%
800,000 - 899,999	10	6	-40.0%	42	36	-14.3%
900,000 - 999,999	5	5	0.0%	22	37	68.2%
1,000,000 - 1,999,999	15	9	-40.0%	81	89	9.9%
2,000,000 +	1	0	-100.0%	13	13	0.0%
TOTALS	792	865	9.2%	4962	5689	14.7%

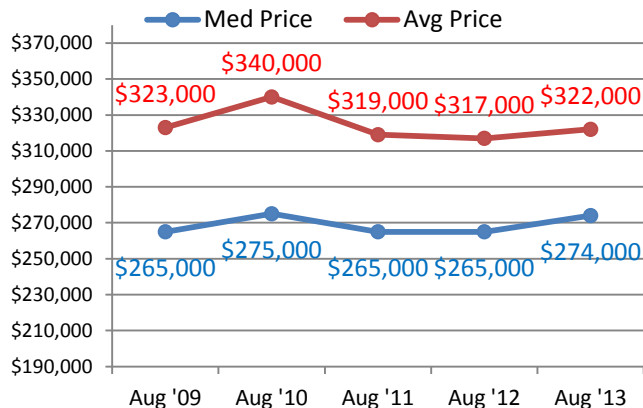
SETTLEMENTS BY PRICE RANGE



AVERAGE DAYS ON MARKET



AVERAGE & MEDIAN PRICE



DATA SOURCE: Trend Multiple Listing Service

NOTES: Properties not listed through this MLS are not reflected. The term "sales" represents ratified purchase contracts. Current year information is preliminary and subject to revision. Current year-to-date contract information may not equal the sum of the monthly contract totals reported above